

Panelmonteret stikkontakt

Varenr. 1366

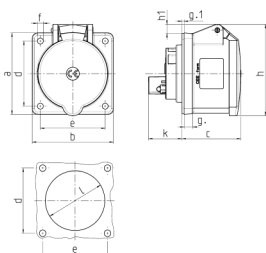


- skrueterminaler
- lige

Tekniske data

| | |
|----------------------------|--------------|
| Ampere | 16 A |
| Poler | 3 p |
| Volt | 230 V |
| Klokposition | 6 h |
| Hertz | 60-50 Hz |
| Forbindelsesteknologi | Skruekontakt |
| Kontakt | standard |
| Beskyttelsestype | IP44 |
| Flange | 75x75 mm |
| Fikseringshul | 60x60 mm |
| Vægt | 136 g |
| Overensstemmelseserklæring | VDE |

Dimensioner



| Drawing 1 MB 247 | Amp. Poles | 16 | | | 32 | | |
|--|---------------|-----|-----|-----|-----|-----|-----|
| | | 3 | 4 | 5 | 3 | 4 | 5 |
| Dim. in mm | a | 75 | 75 | 75 | 75 | 75 | 75 |
| | b | 75 | 75 | 75 | 75 | 75 | 75 |
| | c | 53 | 53 | 55 | 64 | 64 | 65 |
| | d | 60 | 60 | 60 | 60 | 60 | 60 |
| | e | 60 | 60 | 60 | 60 | 60 | 60 |
| | f | 5.5 | 5.5 | 5.5 | 5.5 | 5.5 | 5.5 |
| | g | 8 | 8 | 8 | 8 | 8 | 8 |
| | g-1 | 2 | 2 | 2 | 2 | 2 | 2 |
| | h | 75 | 80 | 83 | 89 | 89 | 100 |
| | h1 | | 6 | 8 | 11 | 11 | 12 |
| | k | 31 | 32 | 32 | 39 | 39 | 39 |
| | l | 43 | 52 | 54 | 58 | 58 | 62 |
| Terminal for cond. cross section (mm ²) min.-max. | | 1.5 | 1.5 | 1.5 | 2.5 | 2.5 | 2.5 |
| | | -4 | -4 | -4 | -10 | -10 | -10 |